



Madison Water Utility
119 E. OLIN AVE.
MADISON, WI 53713

CITY OF MADISON

MADISON WATER UTILITY

PUBLIC WORKS PLAN OF PROPOSED IMPROVEMENT

PUBLIC IMPROVEMENT PROJECT APPROVED

APPROVED DATE: APRIL 25, 2023

BY THE COMMON COUNCIL OF MADISON, WISCONSIN

PUBLIC IMPROVEMENT DESIGN APPROVED BY:

5/11/2023

Pete Holmgren, PE
Chief Engineer - Madison Water Utility

WATER DESIGNED BY:



5/12/2023

INDEX OF SHEETS

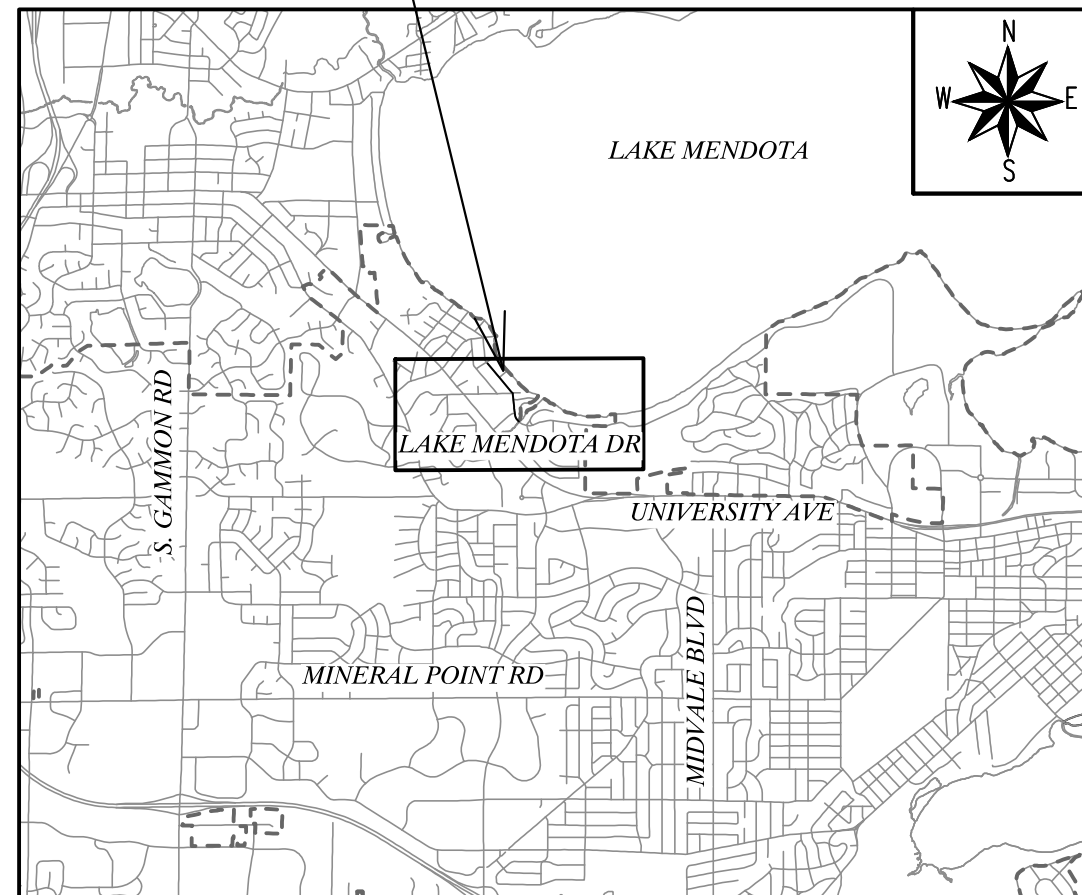
SHEET NO.	1	TITLE SHEET
SHEET NO.	W-1	WATER PLAN OVERVIEW
SHEET NO.	W-2 TO W-7	WATER LINING & BYPASS PLAN
SHEET NO.	W-8	WATER IMPACT PLAN

CIPP 2023 LAKE MENDOTA DRIVE

CITY PROJECT NO. 14659
CONTRACT NO. 9319

PROJECT LOCATION

CONVENTIONAL SIGNS	
FIELD VERIFY ALL UTILITY LOCATIONS	
WATER MAIN TO BE LINED	
BYPASS 2-IN OR LARGER	
BYPASS AREA, NO LINING	
BYPASS AREA W/ LINING	
WATER	
CITY OF MADISON LIMITS	

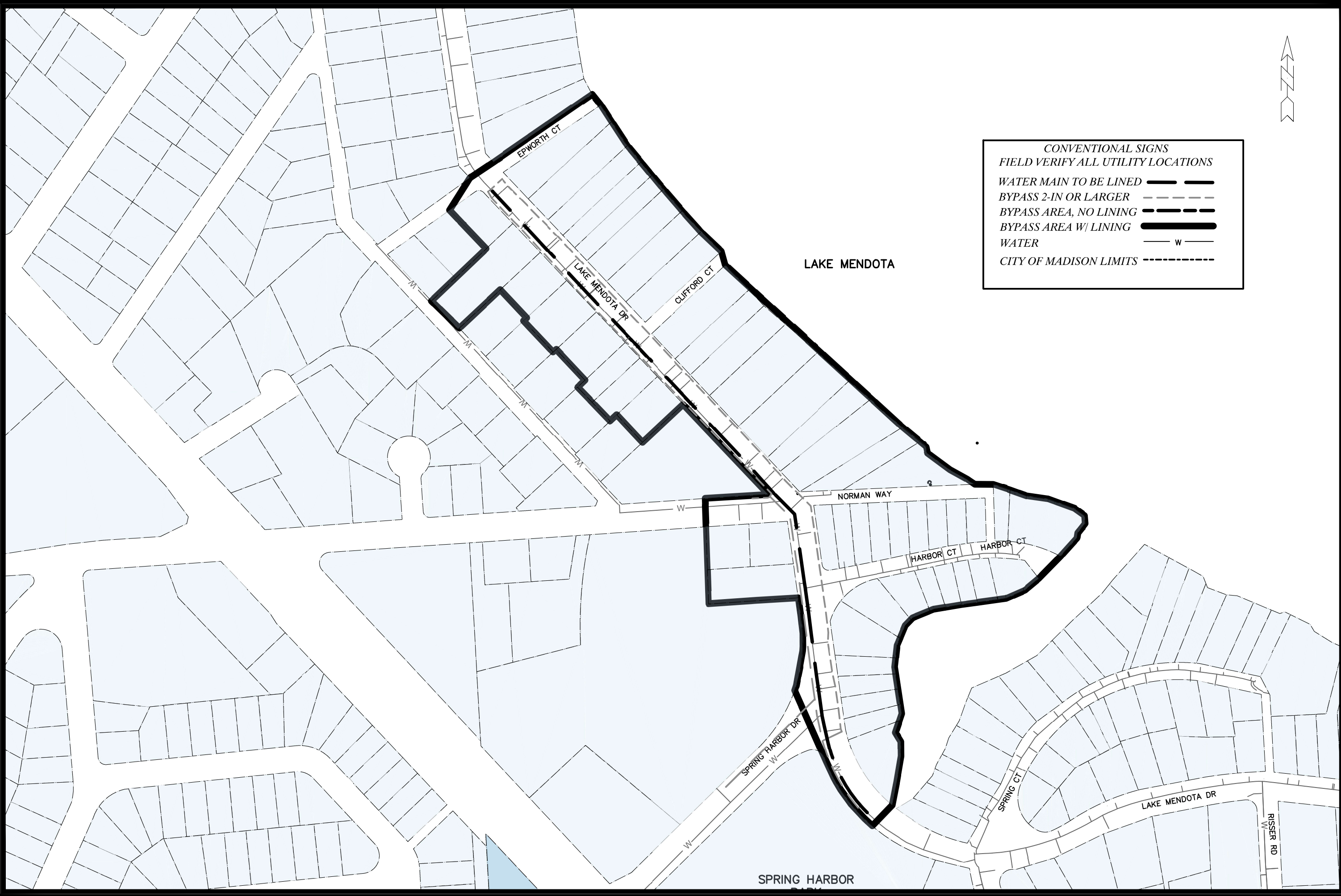


PLOT SCALE: 1" = 1'

PLOT NAME:

REV. DATE: 5/10/2023 11:44 AM

ORIGINATOR: CITY_OF_MADISON



CONVENTIONAL SIGNS
FIELD VERIFY ALL UTILITY LOCATIONS

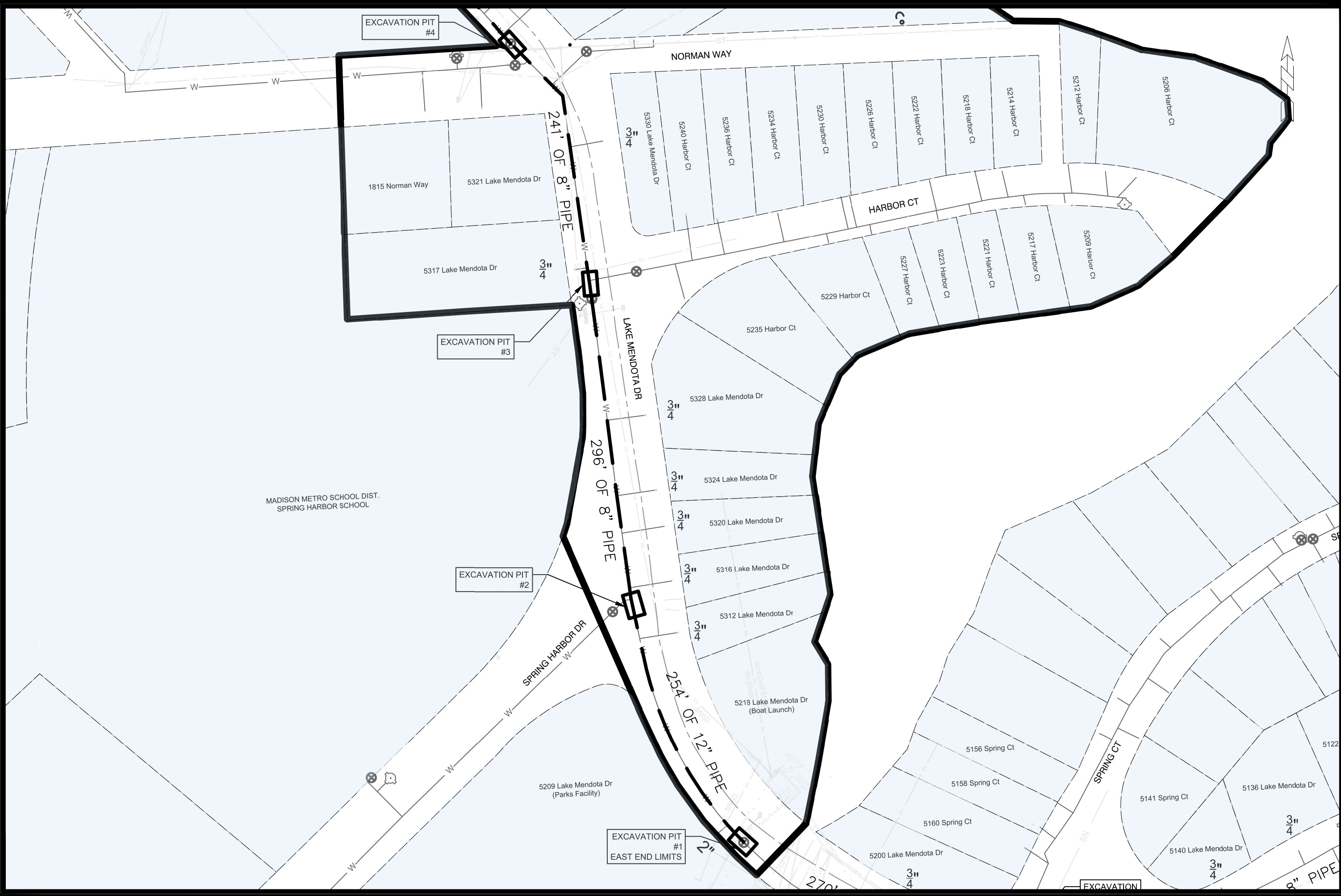
WATER MAIN TO BE LINED	— —
BYPASS 2-IN OR LARGER	- - - -
BYPASS AREA, NO LINING	- · - · - ·
BYPASS AREA W/ LINING	▬▬▬▬
WATER	— w —
CITY OF MADISON LIMITS	- - - -

SCALE: 1" = 200'
 DESIGNED BY: NGM
 MADISON WATER UTILITY
 119 E OLIN AVE, MADISON, WI 53713
 PRINTING DATE: 5/12/23

CIPP 2023 LAKE MENDAOTA DRIVE
 PROJECT OVERVIEW
 CITY OF MADISON, WISCONSIN
 CONTRACT NO: 9319



14659
 W-1



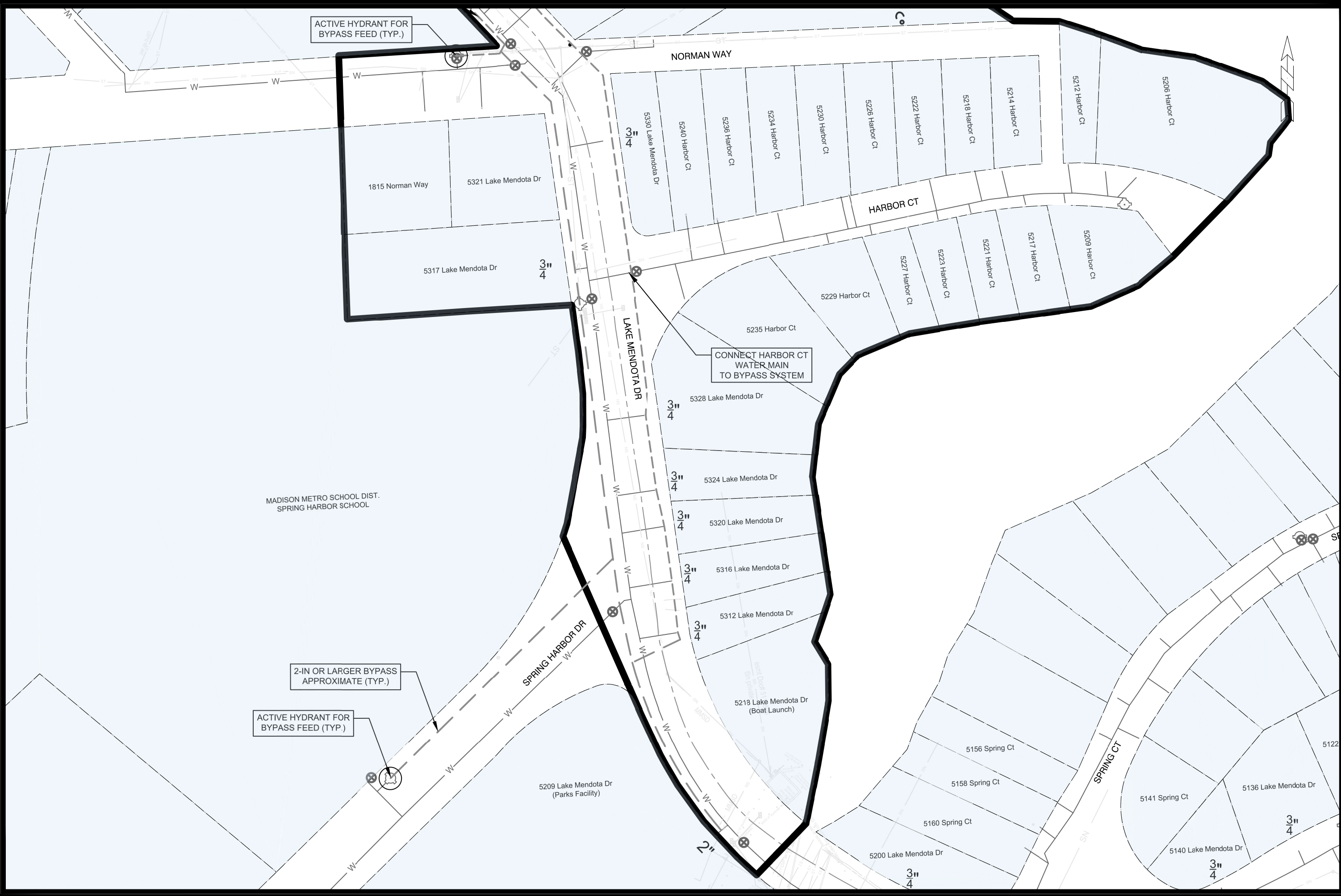
MADISON METRO SCHOOL DIST.
SPRING HARBOR SCHOOL

SCALE: 1" = 80'
 DESIGNED BY: NGM
 MADISON WATER UTILITY
 119 E OLIN AVE, MADISON, WI 53713
 PRINTING DATE: 5/12/23

CIPP 2023 LAKE MENAOTA DRIVE
 WATER MAIN LINING & BYPASS PLAN
 CITY OF MADISON, WISCONSIN



14659
 W-2



ACTIVE HYDRANT FOR BYPASS FEED (TYP.)

CONNECT HARBOR CT WATER MAIN TO BYPASS SYSTEM

2-IN OR LARGER BYPASS APPROXIMATE (TYP.)

ACTIVE HYDRANT FOR BYPASS FEED (TYP.)

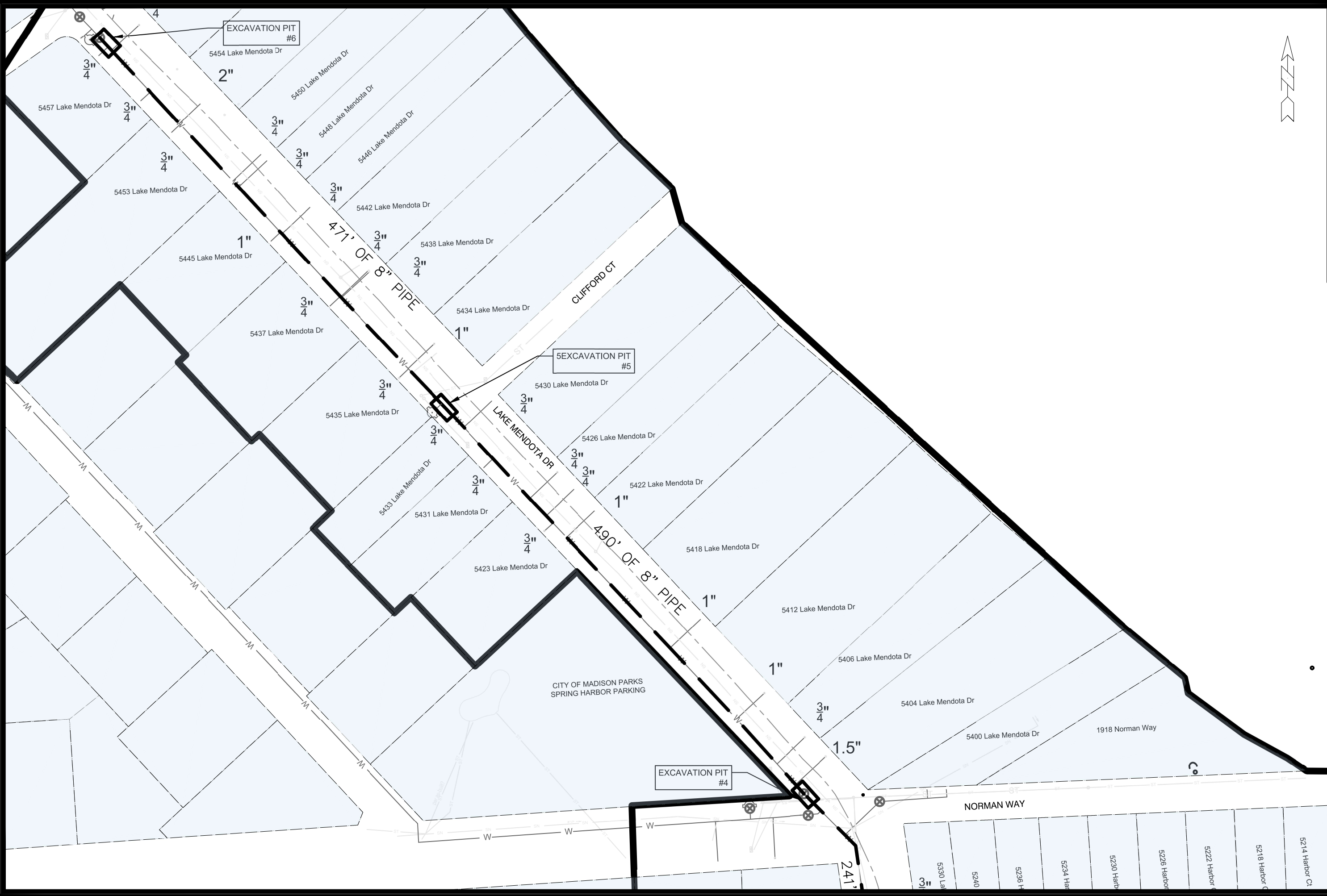
SCALE: 1" = 80'
 DESIGNED BY: NGM
 MADISON WATER UTILITY
 119 E OLIN AVE, MADISON, WI 53713
 PRINTING DATE: 5/12/23

CONTRACT NO: 9319

**CIPP 2023 LAKE MENAOTA DRIVE
 WATER MAIN LINING & BYPASS PLAN
 CITY OF MADISON, WISCONSIN**



14659
 W-3



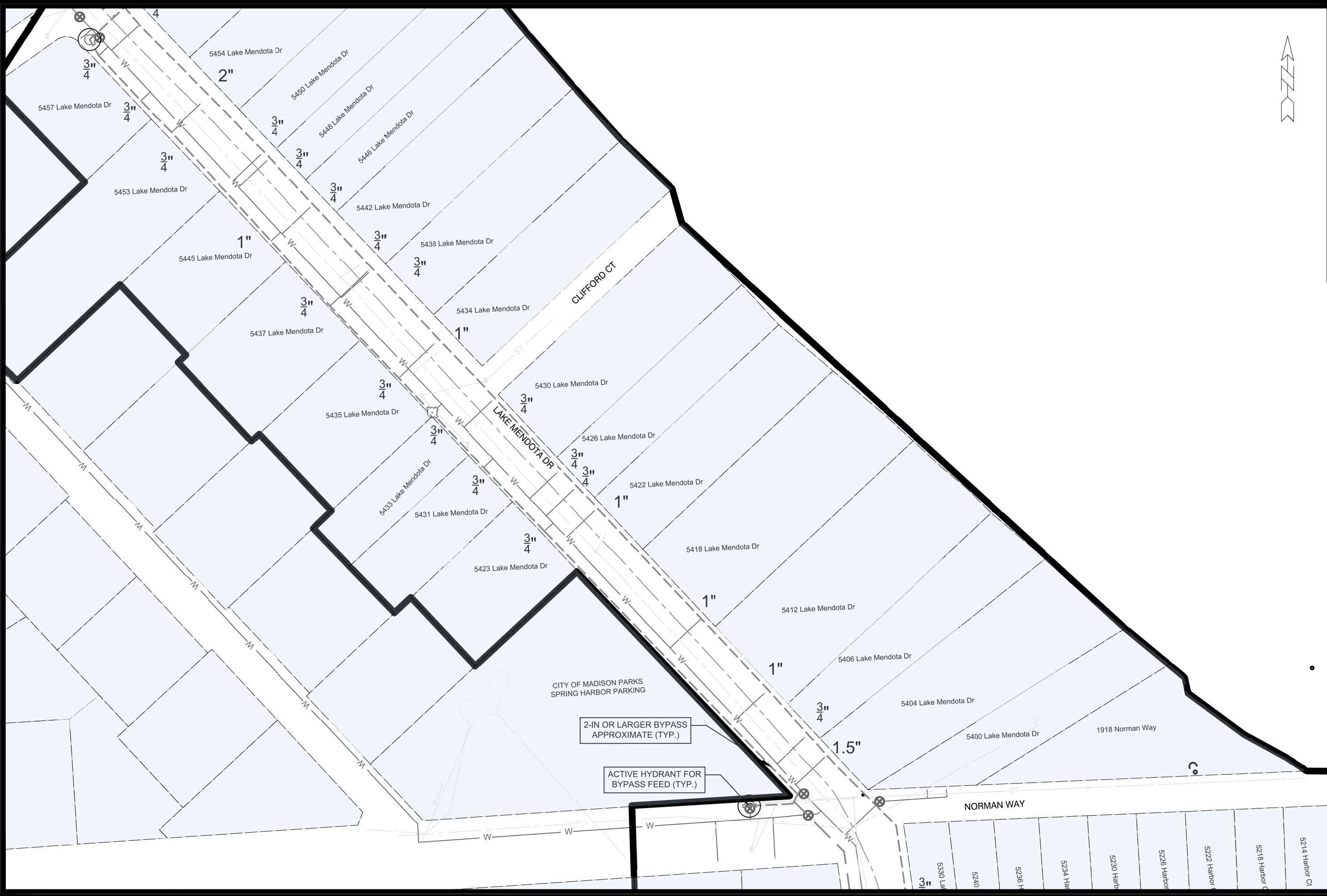
SCALE: 1" = 80'
 DESIGNED BY: NGM
 MADISON WATER UTILITY
 119 E OLIN AVE, MADISON, WI 53713
 PRINTING DATE: 5/12/23

CONTRACT NO: 9319

CIPP 2023 LAKE MENAOTA DRIVE
WATER MAIN LINING & BYPASS PLAN
CITY OF MADISON, WISCONSIN



14659
 W-4



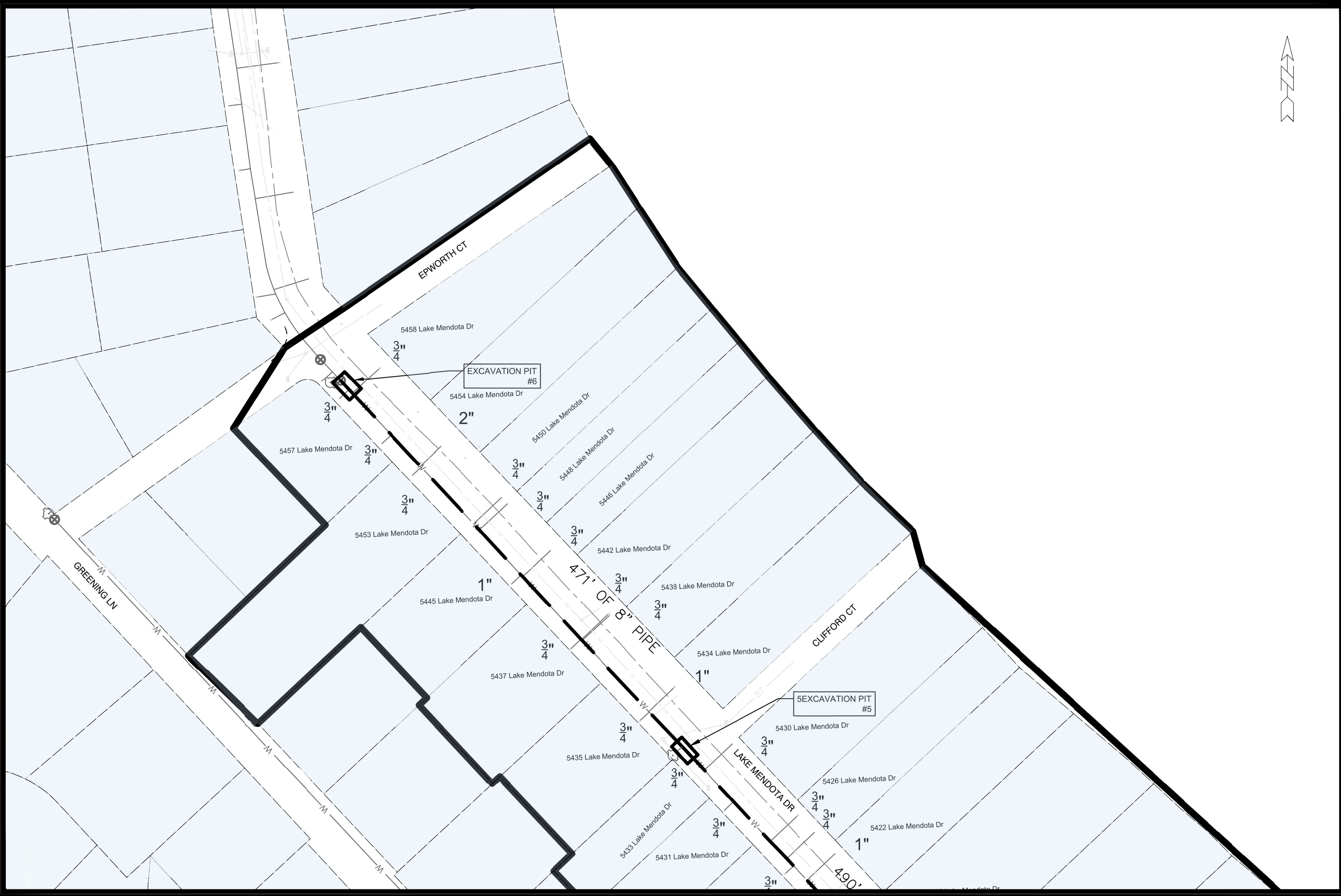
SCALE: 1" = 80'
 DESIGNED BY: NGM
 MADISON WATER UTILITY
 119 E OLIN AVE, MADISON, WI 53713
 PRINTING DATE: 5/12/23

CONTRACT NO: 9319

CIPP 2023 LAKE MENAOTA DRIVE
WATER MAIN LINING & BYPASS PLAN
CITY OF MADISON, WISCONSIN



14659
 W-5



**CIPP 2023 LAKE MENAOTA DRIVE
 WATER MAIN LINING & BYPASS PLAN
 CITY OF MADISON, WISCONSIN**

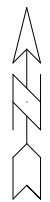
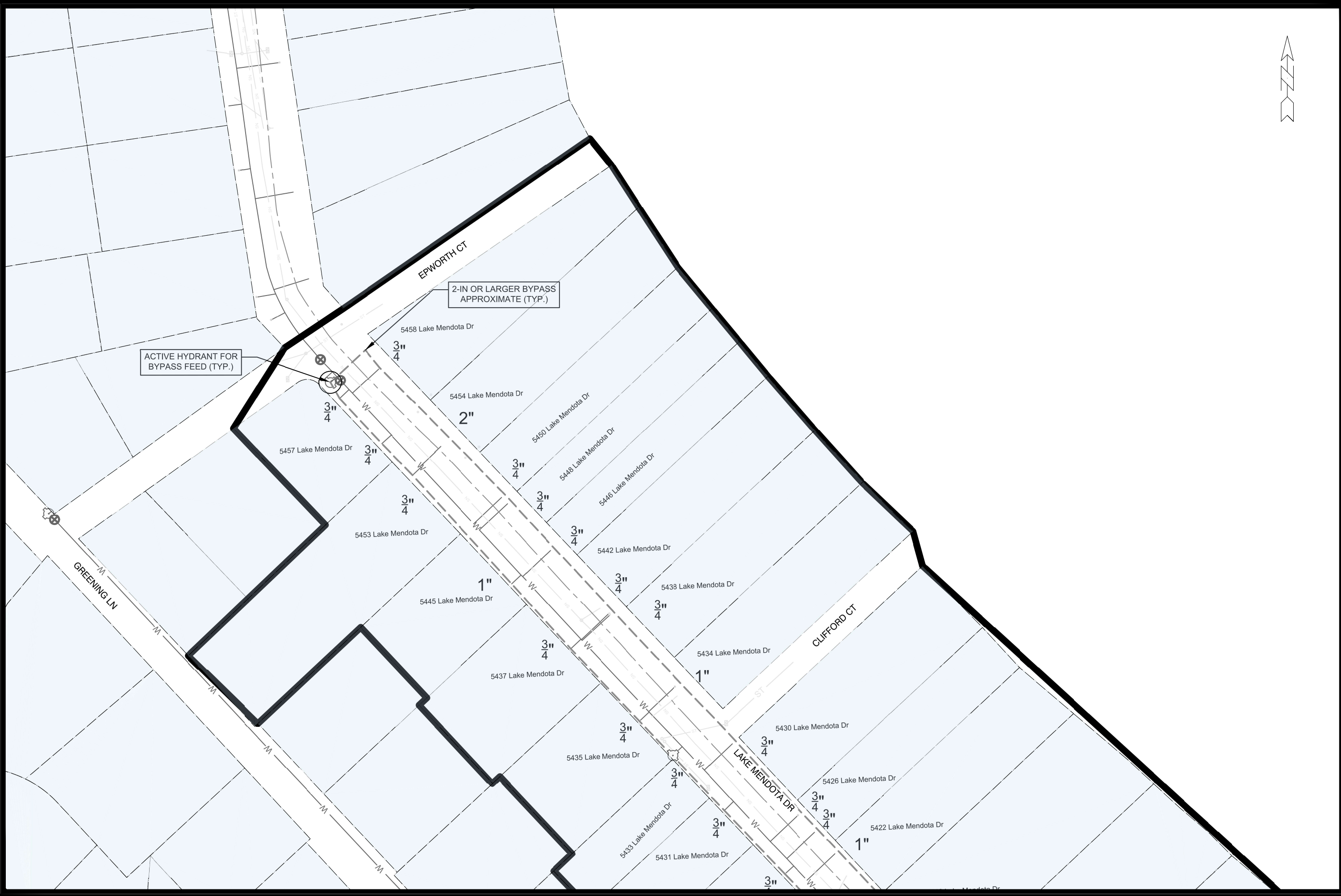


14659
 W-6

CONTRACT NO: 9319

SCALE: 1" = 80'
 DESIGNED BY: NGM
 MADISON WATER UTILITY
 119 E OLIN AVE, MADISON, WI 53713
 PRINTING DATE: 5/12/23





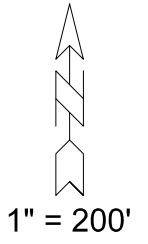
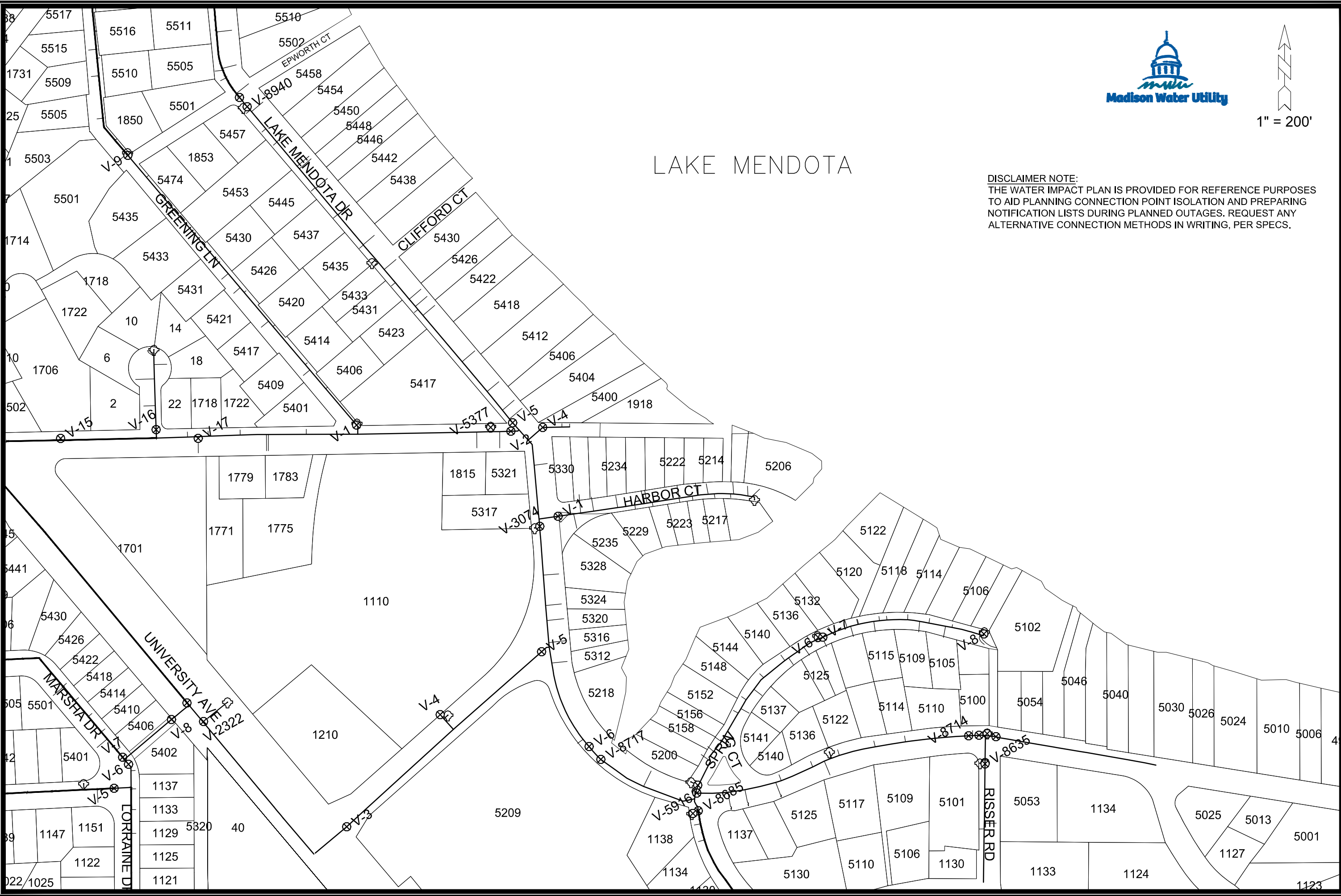
CIPP 2023 LAKE MENAOTA DRIVE
WATER MAIN LINING & BYPASS PLAN
CITY OF MADISON, WISCONSIN



14659
 W-7

CONTRACT NO: 9319

SCALE: 1" = 80'
 DESIGNED BY: NGM
 MADISON WATER UTILITY
 119 E OLIN AVE, MADISON, WI 53713
 PRINTING DATE: 5/12/23



LAKE MENDOTA

DISCLAIMER NOTE:
 THE WATER IMPACT PLAN IS PROVIDED FOR REFERENCE PURPOSES TO AID PLANNING CONNECTION POINT ISOLATION AND PREPARING NOTIFICATION LISTS DURING PLANNED OUTAGES. REQUEST ANY ALTERNATIVE CONNECTION METHODS IN WRITING, PER SPECS.

SCALE: 1" = 200'
 DESIGNED BY: NGM
 MADISON WATER UTILITY
 119 E OLIN AVE, MADISON, WI 53713
 PRINTING DATE: 5/12/23

CIPP 2023 LAKE MENDOTA DRIVE
 WATER IMPACT PLAN LAKE MENDOTA DRIVE
CITY OF MADISON, WISCONSIN
 CONTRACT NO: 9319



14659
 W-8

M:\DESIGN\PROJECTS\14659\CAD\WATER\14093 WU - IMPACT PLAN.DWG